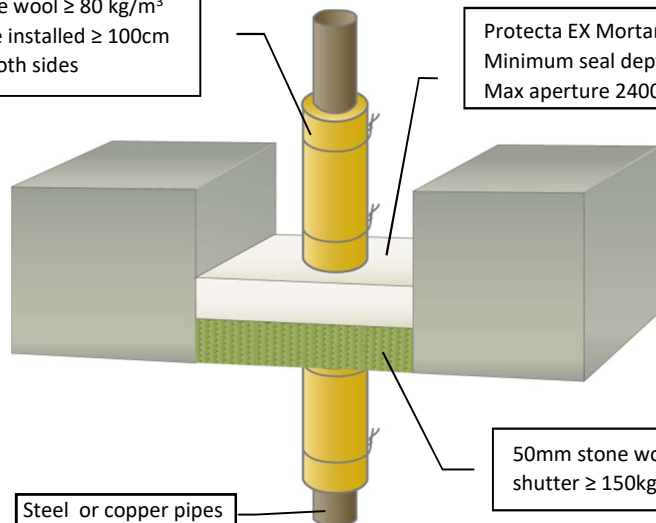


## Protecta EX Mortar - Metal Pipe Interrupted Insulation in 100mm Concrete Floor or Wall

### Installation Instructions

1. Ensure the faces of the aperture opening are free of dust and any other contaminants. The faces may be moistened for better adhesion.
2. Bare metal pipes passing through the seal must be protected against corrosion using a suitable primer/protection system.
3. The seal can be positioned to either side of the construction or anywhere in between.
4. Install a stone wool shutter board to achieve the required thickness of mortar. Make sure that this achieves a very tight seal – any small openings should be sealed with Protecta® FR Acrylic
5. Pour clean water into a suitable mixing vessel and pour enough mortar to obtain the required consistency. Mix well to avoid lumps. Always add the mortar to the water, do not reverse this mixing process.
6. Once the desired consistency is achieved pour or trowel the mortar onto the shutter board making sure that it flows into all corners and around services. Apply a firm pressure to the mortar to eliminate any trapped air bubbles. Build up to the required depth.

Stone wool  $\geq 80 \text{ kg/m}^3$   
to be installed  $\geq 100\text{cm}$   
on both sides



Protecta EX Mortar any position  
Minimum seal depth 50mm  
Max aperture 2400 x 1200mm

Steel or copper pipes  
Interrupted insulation

50mm stone wool  
shutter  $\geq 150\text{kg/m}^3$

### Loadbearing Properties: NOTE following for Health and Safety requirements -

Soft body impact, serviceability 500Nm. Soft body impact, safety in use 700Nm. Hard body impact serviceability 6Nm. Hard body impact, safety in use 10Nm. Concentrated load to 15kN on size up to 1500mm x 1000mm (no failure), 4.85kN on sizes up to 1200mm x 2400mm.

### Minimum separations and limitations

An aperture can include several services, and they may also be different. Services within the system Protecta® FR Board seal do not require a minimum separation, except pipes where pipe insulation penetrates the seal and plastic pipe penetrations which should be a minimum of 30 mm from other services in the aperture. Services should be a minimum of 25mm from seal edges. The total amount of cross sections of services (including insulation) should not exceed 60% of the penetration area. The minimum permitted separation between adjacent apertures is 200mm.

### Permitted Aperture Sizes

Where standard aperture sizes of 1200mm by 2400mm are stated, the following additional sizes are automatically permitted:

1100mm x 2900mm      1000mm x 4000mm  
800mm x infinite length

System/FPA Register ID# FC202

|                     |   |
|---------------------|---|
| <b>Products</b>     | Protecta EX Mortar<br>Stone wool shutter  |
| <b>Application</b>  | Fire stopping of insulated metal pipes in rigid floors or walls   |
| <b>Construction</b> | Minimum floor or wall thickness of 100mm and comprise aerated concrete or concrete with a minimum density of $650\text{kg/m}^3$ . |

### Fire & Sound classification

Steel pipes  $\leq \varnothing 40\text{mm}$  with  $\geq 20\text{mm}$  stone wool insulation in maximum apertures  
1200 x 2400mm      FRR -/180/180

Steel pipes  $\leq \varnothing 219\text{mm}$  with  $\geq 30\text{mm}$  stone wool insulation in maximum apertures  
1200 x 2400mm      FRR -/180/90  
or 280 x 280mm      FRR -/240/90

Copper pipes  $\leq \varnothing 54\text{mm}$  with  $\geq 20\text{mm}$  stone wool insulation in maximum apertures  
1200 x 2400mm      FRR -/180/180

Alupex pipes  $\leq \varnothing 75\text{mm}$  with  $\geq 20\text{mm}$  stone wool insulation in maximum apertures  
1200 x 2400mm      FRR -/180/180

Sound reduction (seal only)      STC 64

As a part of our policy of on-going product development and testing, we reserve the right to modify, alter or change product specifications without giving notice. All information contained in this document is given in good faith and is provided for guidance only. Any drawings provided are for illustrative purposes only. As Polyseam has no control over the methods or competence of installation and of prevailing site conditions, no warranties, expressed or implied, is intended to be given as to the actual performance of the product mentioned or referred to herein and no liability whatsoever will be accepted for any loss, damage or injury arising from the use of the information given.